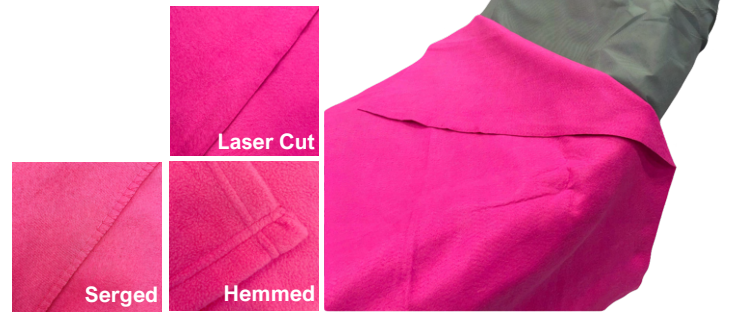


# Taylor Pink Series

Taylor Healthcare Products Inc. continues as the industry leader in quality, innovation and customer service!

Taylor Healthcare's line of Pink products is a limited series introduced to promote breast cancer awareness and research. Show your support with our generous offering of blankets, soft stretchers and disposable fitted stretcher sheets.

- Taylor Polar Fleece™ Blankets set the standard for soft warmth and superior comfort with a silky smooth finish.
- Our TitanPC™ aids in patient rescues and transfers when EMS professionals need compact and lightweight transport units to traverse confined spaces. They are fluid impervious\* and securely lift up to 1,500 lbs.
- Taylor SureFit™ and G-Force™ fitted sheets provide the surest fit, gripping the mattress tightly and helping to prevent slippage. These sheets are fluid resistant\*\* and designed to aid in patient transfers.



Item #	Product	Color	Details	Size	Packaging
<b>Polar Fleece</b>					
60-FCB4080P	First Comfort™ Fleece Blanket	Pink	Laser Cut Edge	40" x 80"	10/case
60-FCB4080S-30P	First Comfort™ Fleece Blanket; Vacuum Packaged	Pink	Laser Cut Edge	40" x 80"	30/case
60-TAY600130	Light Weight Polar Fleece Blanket; Vacuum Packaged	Pink	Serged Edge	60" x 90"	20/case
60-TAY600330	Taylor Ultra Plush Polar Fleece™ Blanket	Pink	Hemmed Edge	60" x 90"	8/case
<b>TitanPC™</b>					
43-TITANPC-P	TitanPC™ Soft Stretcher; 1500 lbs. Lift Capacity; Nonwoven/Poly	Pink	Fluid Impervious	40" x 80"	10/case
<b>G-Force™ Series</b>					
92-EFORCE-P	EFORCE™ Fitted Sheet for G-FORCE™ shaped mattresses	Pink	300 lbs. Lift Capacity	36" x 90"	50/case
90-GFRC3690-P	G-Force™ Fitted Sheet for G-FORCE™ shaped mattresses	Pink	400 lbs. Lift Capacity	36" x 90"	30/case
<b>SureFit™ Series</b>					
92-SFS3084-P	Standard Fitted Sheet	Pink	300 lbs. Lift Capacity	30" x 84"	50/case
90-BSS3084-P	Standard Fitted Sheet	Pink	400 lbs. Lift Capacity	30" x 84"	50/case
90-BXS3490-P	Extended Length Fitted Sheet	Pink	400 lbs. Lift Capacity	34" x 90"	50/case

\* Fluid Impervious – Fluid does not penetrate the material even with time and pressure

\*\* Fluid Resistant – Fluid beads up and could penetrate the material with time and pressure